

# Messages for practice:

## FEMALE GENITAL MUTILATION (FGM)

### RISK FACTORS

- Position in family and level of integration into UK society.
- Any girl born to a woman who has been subject to FGM
- Any girl whose sister has already undergone FGM
- Any girl withdrawn from personal, social health, education;
- Age varies but majority between 5-8 years
- Children going out of country for prolonged periods.

### DEFINITION

FGM is a procedure that includes partial or the total removal of the external female genital organs for cultural or other non-therapeutic reasons. The practice is medically unnecessary, extremely painful and has serious health consequences

### PRINCIPLES

- Safety and welfare of child paramount
- FGM is illegal in the UK
- Not to be decided as a matter of personal belief
- Agencies to act in accordance with UN Convention on the Rights of a Child

## F G M

A form of child abuse + violence against women and girls and should be dealt with as part of child/adult protection procedure.

### CONSEQUENCES OF FGM

#### Short Term

- Severe pain
- Haemorrhage
- Wound infection (blood born virus Hep B HIV)
- Urinary retention
- Emotional/psychological shock
- Injury to organs/surrounding tissue
- Death

#### Long Term

- Chronic vaginal pelvic infections
- Difficulties with menstruation
- Chronic urinary infections
- Scarring, cysts, possible infertility
- Complication in childbirth
- Pain during sex; loss of sensation
- Psychological/mental health problems

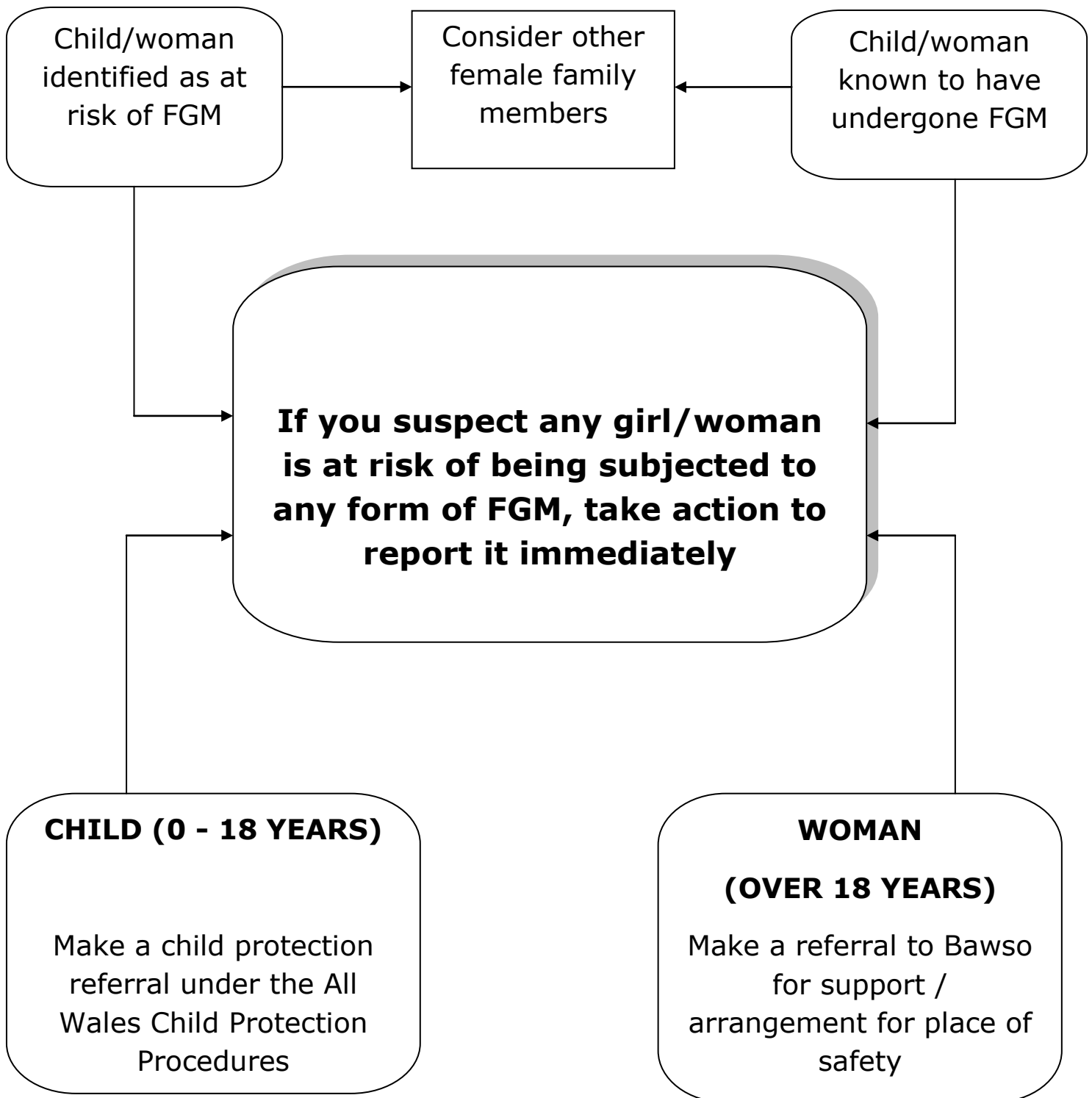


### LEGISLATION

- FGM is illegal in the UK under the FGM Act 2013
- A person is guilty of an offence if the excise, or mutilate the whole or any part of a girls/woman' genital organs.
- It is an offence to assist a girl/woman to mutilate her own genitalia.
- It is an offence to assist FGM to take place even outside the UK.

# FEMALE GENITAL MUTILATION (FGM)

## ACTION FLOWCHART



Please ensure cultural sensitivity and respect remains present throughout any process of referral. Families may not understand why there is need for intervention in what they may see as a cultural practice specific to their way of life.